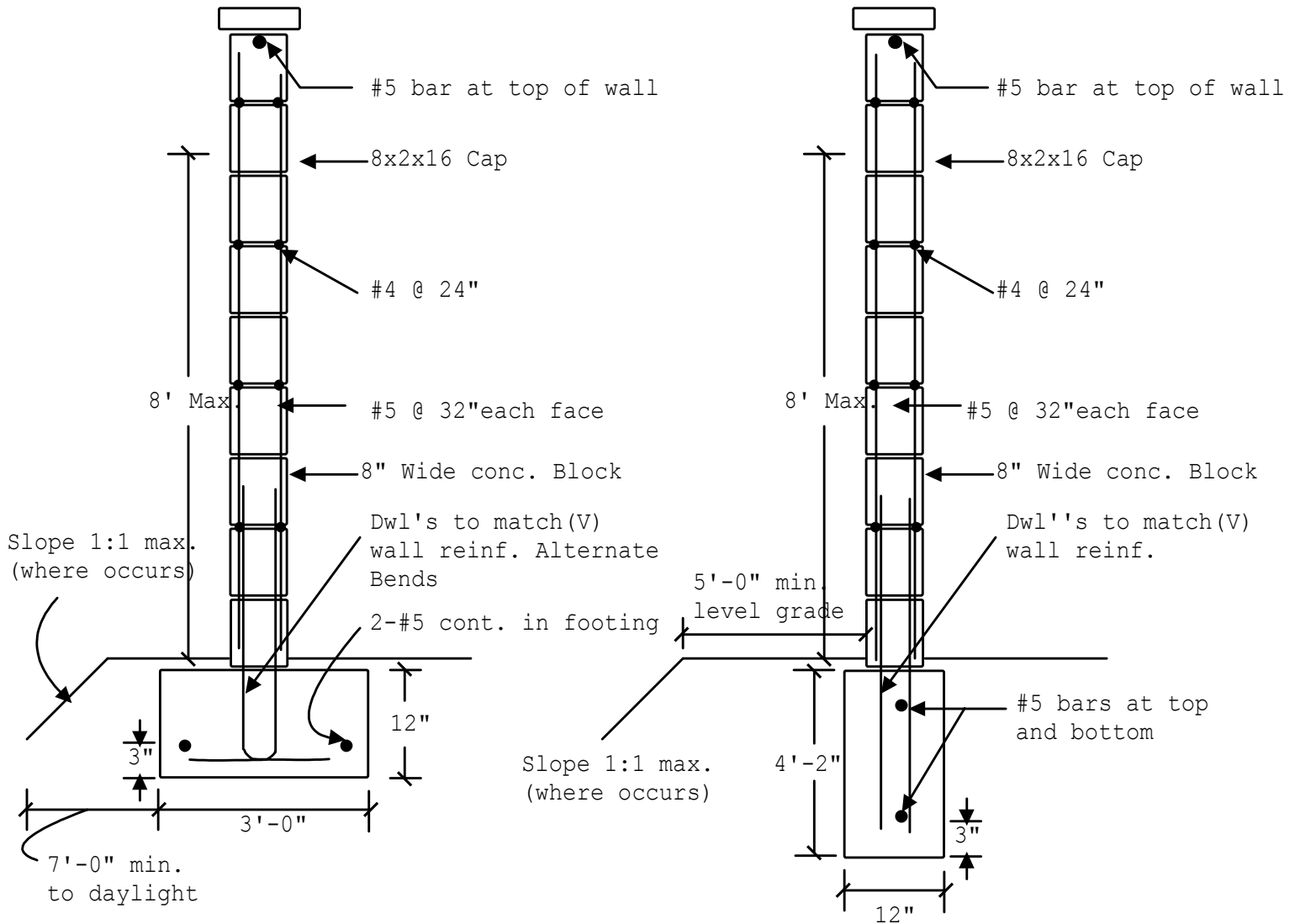




City of El Cajon
Building Division
 200 Civic Center Way
 El Cajon, CA 92020
 Phone: (619) 441-1726, 1727

Block Fence Detail - 8'-0"

(Based on City of San Diego Master Plan 47-8)



Alternate 1

Alternate 2

Design Criteria:

1. Allowable soil bearing pressure = 1500 PSF minimum.
2. Allowable lateral passive pressure = 100 PSF minimum.
3. Seismic Design Cat.D, soil profile type sd, seismic source type "a" >5km.
4. Wind loads based on 70 MPH wind speed.
5. See reverse side for construction specifications.

Note: A permit is required for any fence walls over 6 feet in height.